



Term 4 Week 6

12th November 2021

Message from the Principal

Term Progress and End of Year Activities

We have just passed the halfway point of Term 4 and the teachers and students are focusing on literacy and numeracy learning outcomes now that face to face learning is back. There are some great examples of K-6 quality learning showcased in this newsletter so keep reading!

It certainly has been a disrupted second half of the year with many planned school activities having been postponed or cancelled due to constantly changing COVID restrictions and guidelines. Planning for end of school activities is well underway. However, changing advice from NSW Health and the Department of Education will guide the final organisation of many activities that students participate in over the final 5 weeks of term. Hopefully in the next week we will have more clarity on which activities can go ahead on site and off site. As soon as final details are organised the school will share information with families to allow as much time possible for planning and payments. The staff appreciate the patience of the students and community at this time.

A BIG Thank You To our P&C for the New Stage 1 Readers

On behalf of the Stage 1 teachers and students I would like to thank our wonderful P&C for funding additional quality readers for all Year 1 and 2 classes to the value of \$12 500. This has made sure that all Stage 1 classes have an expanded library of readers for both in school literacy learning and to support the Home Reading Program. This has been a fantastic investment and ensures that our students have the very best literacy resources available. Our P&C meets for the final time this term online next Tuesday at 7pm.

Parent/Carer requests for 2022 Class Placement

The school is now moving into the planning process for 2022 classes. Extraordinary class placement requests for your child in 2022 must be in writing or emailed (addressed to the Principal) and submitted to the school office by Friday 26 November 2021. Please do not request specific teachers for your child as it is not always possible for the school to action this, nor is it appropriate to ask your child's current class teacher to pass on a request for 2021 placement. Previous years' requests for class placement that are still relevant must also be included for consideration in 2022 classes.

Returning to Sans Souci PS in 2022

Earlier this term a note was sent home to confirm whether or not existing K-5 students were returning to SSPS in 2022. Thanks to families that have already returned this information to school. A reminder note will be sent home to students who are yet to return this information. Please return the note by Friday November 19 to assist with school planning and staffing.

Bring Your Own Device (BYOD) 2022 – Year 4 Transition Program

Next Tuesday all Year 4 will participate in the Year 4 BYOD transition program. The students will be required to publish their cinquain poem 'Life cycle of a T-shirt' written in connection with their science unit 'Material World'. The students will be using the *Explain Everything* app on the Stage 2 classroom iPads to publish their poems. Year 4 students will use the many functions in the *Explain Everything App* to type, animate and record themselves reading their poem. Several expert Year 6 students will support the Year 4 students in using the *Explain Everything* app. Later in the day the students will be given the opportunity to present their published poems to their classmates. Stage 3 teachers are looking forward to welcoming the 2022 Year 5 students into next year's SSPS Stage 3 BYOD program.
Mrs Williamson

Tell them from Me Parent Survey, Term 4 2021

This Term, our school is again participating in the Partners in Learning parent survey, another part of the Tell Them from Me suite of surveys (student, teacher and parent surveys). The survey asks parents and carers questions about different factors that are known to impact on student wellbeing and engagement.

Running this survey will help our school understand parents' and carers' perspectives on their child's experience at school. These include: communication between parents/carers and staff, activities and practices at home and parent/carer views on the school's support of learning and behaviour. This valuable feedback will help our school make practical improvements and inform directions for our school's 2021- '24 School Improvement Plan.

The survey is conducted entirely online on smartphones, iPads, tablets, laptops or computers. The survey will typically take 15 minutes or less to complete and is completely confidential.

An E-News will be sent to all families next Monday 15th November with a link to respond and complete the survey. Participation in this survey is strongly encouraged for all families!

School Hats -Reminder

Please ensure that your child has a school hat with them each day. All students are required to wear hats when in the playground for lunch and fruit break. If your child has lost their school hat please purchase one through Munch Monitor and it can be picked up from the canteen. All uniform, bags, lunch box, water bottles and hats must have your child's name on them.

Gifts for Staff

At different stages of the school year families often show appreciation of school staff by the way of gifts. I would like to bring to your attention that school staff members must declare and or decline gifts over the value of \$50 received from community members. In many cases gifts can be retained by the teacher or staff member if the individual contribution is less than \$50 each. Please understand that there is no expectation for school employees to receive gifts from the community.

Remembrance Day

In 1997, Governor-General Sir William Deane issued a proclamation formally declaring 11 November to be Remembrance Day, urging all Australians to observe one-minute silence at 11.00am on 11 November each year, to remember those who died or suffered for Australia's cause in all wars and armed conflicts.

Yesterday the school leaders conducted a Remembrance Day ceremony for all students via the school's intercom system. On 11 November at 11.00am, we paused to remember all of the men and women of the Australian Defence Force who have made the ultimate sacrifice.



Albert Cyril Raven

On Remembrance Day, I brought my great grandfather's war medals to show my class. He was Sgt. Albert Cyril Raven who was a bomber during the Second World War. He was a member of the Royal Air Force-111 Wing T Command and was awarded the 1939-45 Star, France and Germany Star, Defence Medal and War Medal (Mentioned in Dispatches). I feel very proud of my great grandfather who must have fought very bravely during World War II. My family and I will always treasure these medals.

Joaquin P 6T

First Nations Education

First Nations Education is an important part of our curriculum at SSPS. It provides all students with the opportunity to develop positive relationships with others by appreciating and respecting diversity and gaining an understanding of cultural differences. This term, we are excited to announce that Mrs Lorraine McIntosh, an experienced First Nations teacher, has joined our staff and is working with our First Nation's students two days a week.

Mrs McIntosh will be working in the classroom, in partnership with the class teacher, to provide additional targeted literacy and numeracy support for students. The aim of the program is to assist our students academically, provide positive role modelling and cultural support, as well as understanding within the traditional education system. At SSPS, we constantly strive to improve our First Nations students' outcomes and experiences and are excited by the possibilities of this program.



Year 6 BBQ Fundraiser

On Friday 3rd December, Year 6 will be holding their second fundraiser for the year. Their BBQ lunch will be available for all students who wish to order a sausage sandwich and juice popper on the day. AN information note with an attached order form will be sent home to families on Monday. Money raised will go towards subsidising the cost for our Year 6 farewell dinner. With our Year 6 students having only a few weeks left of their time here at Sans Souci Public School they've nominated the day to also be a mufti day and encourage all their K-5 peers to 'let their hair down' and come to school on the day with their hair looking at crazy as can be!



2021 NSW All Schools Athletics Championships

Registration for event closes at Mon 29 Nov 2021 10:00.

Thu 09 Dec 2021 10:00 - Sun 12 Dec 2021 17:00

Sydney Olympic Park Athletics Centre (SOPAC), Athletic Centre Edwin Flack Avenue, Sydney Olympic Park

PLEASE NOTE - For athletes who attended primary school in year 6 who will be the age of 12 by the end of this year are also eligible. More information on eligibility, registration and selection can be found by following this link:

<https://www.nswathletics.org.au/events/117329/>

Special Religious Education (SRE) and Special Ethics Education (SEE)

Due to the current restrictions on mixing of cohorts the SRE and SEE program will not recommence this year. I would like to acknowledge the volunteer SRE and Ethics teachers for their time and commitment to SSPS this year.

Ethics program at SSPS

Unfortunately, our ethics program has finished for the year. On behalf of all our ethics teachers, I would like to thank all our students for their contribution during the classes we were able to have this year and would especially like to wish our year 6 students all the very best for the remainder of their time at SSPS and for their transition into high school next year!

Volunteer ethics teachers needed at SSPS

As our ethics program winds up for 2021, we will be saying goodbye to two of our ethics teachers – Mrs Kirstie Tunstall and Mrs Karly Farrell. I'd like to thank them for their outstanding commitment to teaching ethics to our students for the last three years.

As our ethics program continues to grow each year, we would love for some new parents or carers to join us in delivering this program to our students.

Ethics classes give our students the opportunity to discuss ethical issues with their peers, while developing important thinking, reasoning and discussion skills.

Classes run for 30 minutes each Tuesday morning in two sessions: 9.30am - 10am (Years 3-6) and 10.15am – 10.45am (Years K-2). No teaching experience is necessary; all training is free and provided online by Primary Ethics. All lessons are fully scripted and approved by the Department of Education, no lesson planning is required.

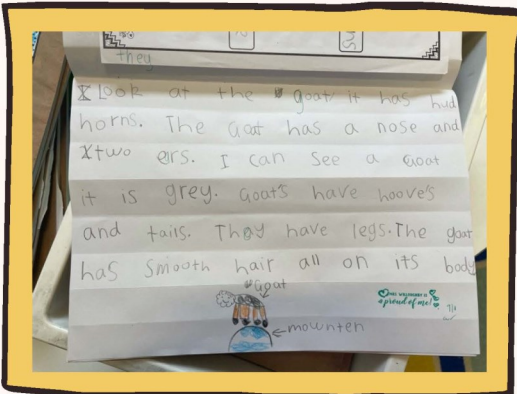
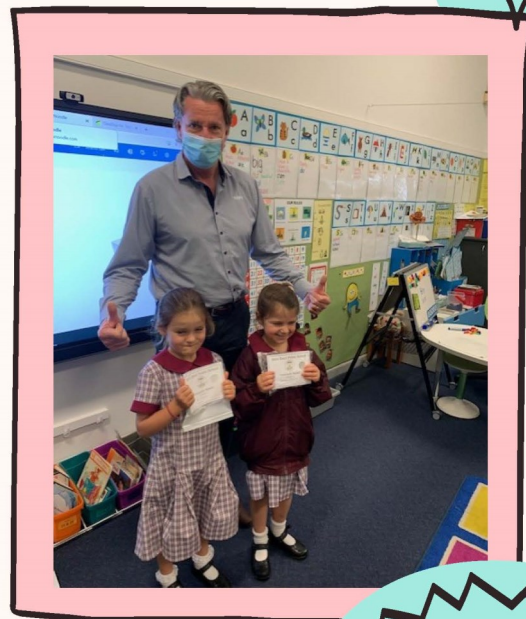
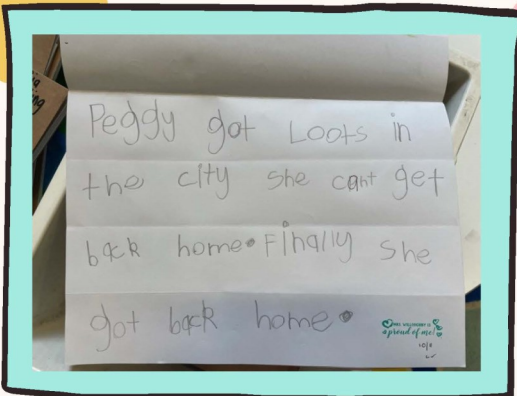
Teaching ethics is a wonderfully rewarding way to get involved with the school – seeing our students grow and develop their critical reasoning skills throughout the year is one of many highlights! You will also be joining a friendly and supportive team (who are parents and grandparents of the school) and learn new skills in the process that can be applied in your home and work life.

To find out more information about becoming an ethics teacher, you can either contact Carolyn Samsa (SPSS Ethics Coordinator) on 0417 060 583 or email carolynsamsa@gmail.com. Alternatively, you can find out more information about Primary Ethics or register your interest to teach on their website www.primaryethics.com.au.

Wishing all our SSPS families a safe and happy end to the school year.

*Carolyn Samsa
Ethics Coordinator, SSPS*


KINDERGARTEN



KINDERGARTEN

Peggy flew a plane
to the city and he
had a lovely time in
it then he found a
plane to go home next
he had a long travel and
on the way home he
had popcorn finally he

only
only
only
only
only
cocoon



In Spring leaves go of trees
and there is only 1 flowers
and caterpillars make a
cocoon.



In spring flowers
bloom and trees
grow. leaves grow
too.



KINDERGARTEN





Stage 1

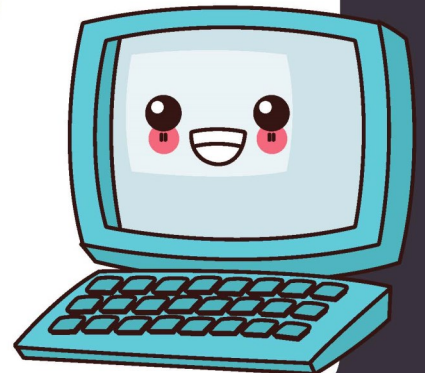
Stage 1 students have been enjoying reading their lovely new PM Readers in class and parents and carers will begin to see some of these come home with their child through our home reading program.

We would like to thank the P&C for their generosity. With their support we have been able to purchase a significant number of new texts, increasing the variety of books within each level and enabling us to continue to send quality readers home as part of our home reading program.

We sincerely thank parents, carers and community members for their assistance!



1/2T



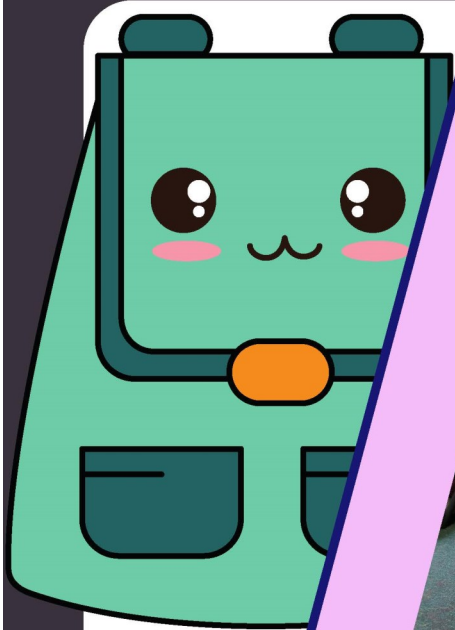


1E



1M

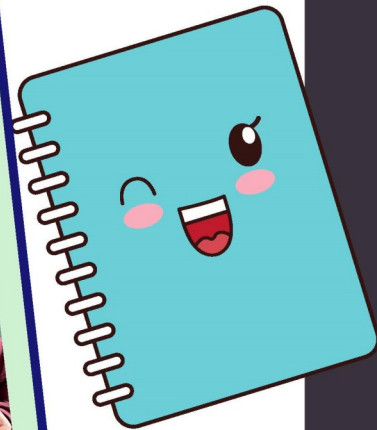




1K



1P

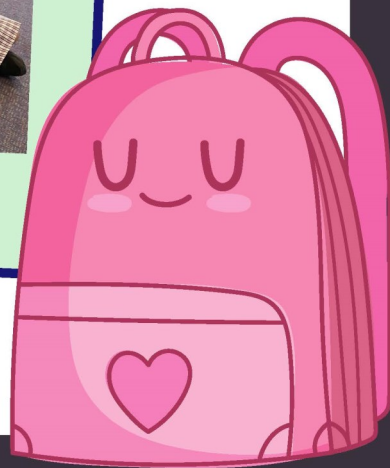




2E

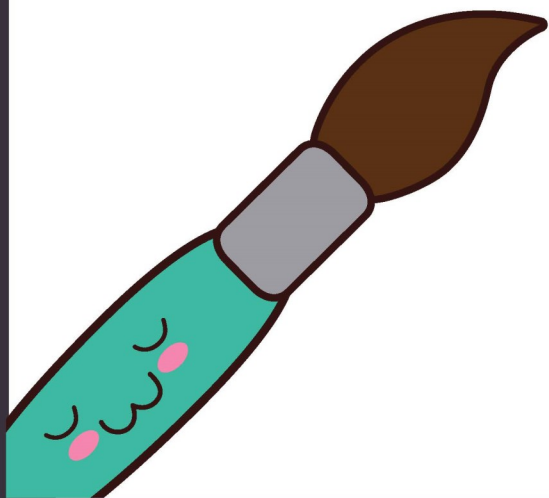


2R



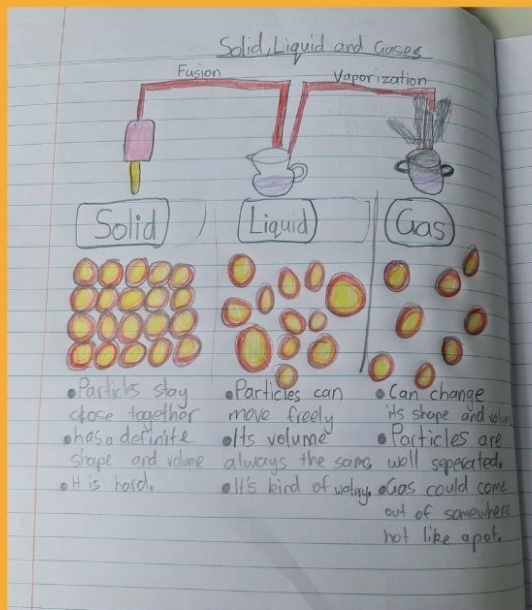


2P



WHAT'S HAPPENING IN, STAGE 2!

Jacey 3N



Ana 3T

4D



Ethan 4C

Summary Felix and Frieda liked making t-shirts and didn't like people not getting payed the appropriate wage.

Quote I like making t-shirts, I don't like people getting paid hardly anything for hard work.

Summary I would love to change the amount of plastic on earth, when it exists it lasts forever.

Quote If I had one wish I would love to reduce the amount of plastic on earth.

Summary Soft plastic is the biggest waste in our bins, just collect them and take to a supermarket.

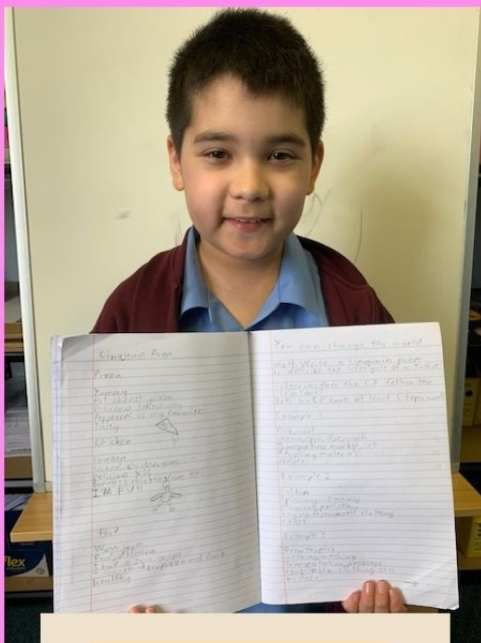
Quote You just need to collect them and take them to a supermarket.

Summary start recycling food scraps, take scraps out everyday so not smelly.

Quote You need to take the scraps out everyday so it doesn't get smelly.

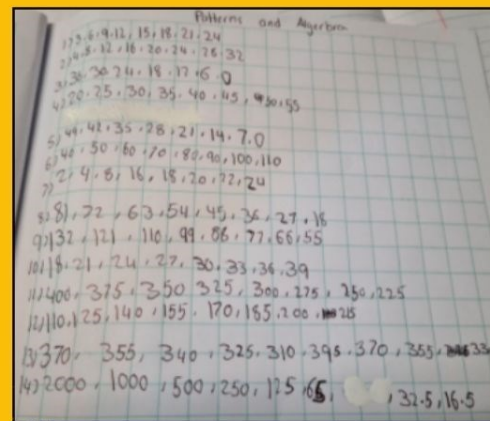


Jarryd 3P

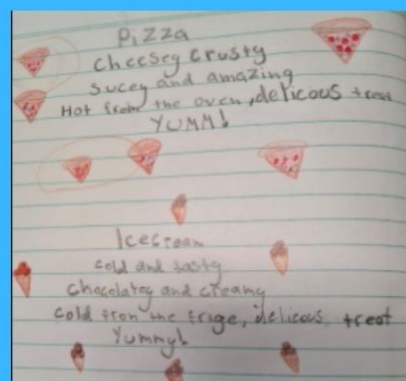


**Growth, pick
Weaving, washing
Transportation.
Package
Recycleable clothing
sell
Reduce**

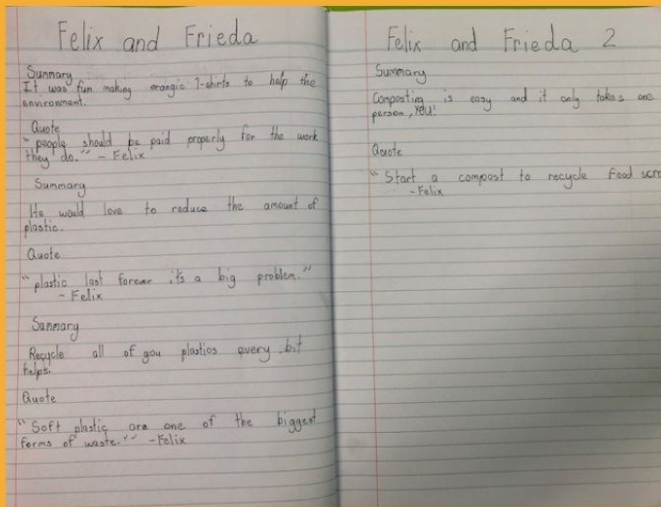
Lachlan 3T



Sybella 4T



Rose & Cilla 4T



Matilda 4C

4D



Thomas 3P

P eople need to be considerate

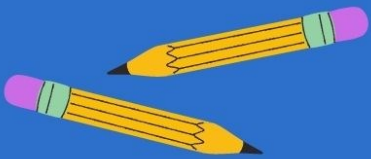
O f all traits this one is deliberate

L ooking after other people

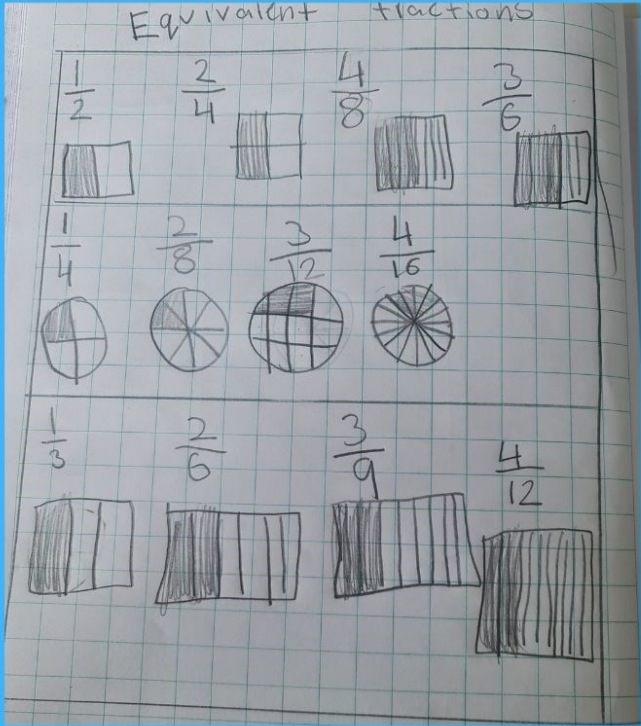
I t's one of the reasons our world is equal

T o be courteous is very respectful

E very form of respect is wonderful!

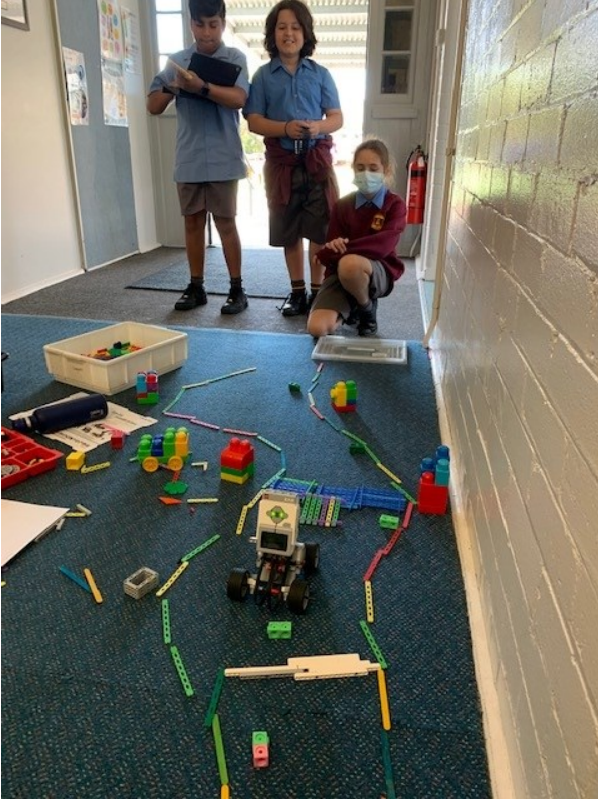


Makayla 3N



Kokoda track EV3 Challenge

Stage 3 students have been studying PNG this term for their Geography unit. They investigated the historical and military history of the Kokoda track and the brutal terrain. Their challenge was to build a track from various materials including the many features and obstacles such as river crossings, bridges, mud slicks and fallen trees. They next coded the EV3 (all terrain vehicle) to navigate along the track and through the obstacles.







Compulsory School Attendance

Information for parents

Education for your child is important and regular attendance at school is essential for your child to achieve their educational best and increase their career and life options. NSW public schools work in partnership with parents to encourage and support regular attendance of children and young people. When your child attends school every day, learning becomes easier and your child will build and maintain friendships with other children.

What are my legal responsibilities?

Education in New South Wales is compulsory for all children between the ages of six years and below the minimum school leaving age. The *Education Act 1990* requires that parents ensure their children of compulsory school age are enrolled at, and regularly attend school, or, are registered with the Board of Studies, Teaching and Educational Standards for homeschooling.

Once enrolled, children are required to attend school each day it is open for students.

The importance of arriving on time

Arriving at school and class on time:

- Ensures that students do not miss out on important learning activities scheduled early in the day
- Helps students learn the importance of punctuality and routine
- Give students time to greet their friends before class
- Reduces classroom disruption

Lateness is recorded as a partial absence and must be explained by parents.

What if my child has to be away from school?

On occasion, your child may need to be absent from school. Justified reasons for student absences may include:

- being sick, or having an infectious disease
- having an unavoidable medical appointment
- being required to attend a recognised religious holiday
- exceptional or urgent family circumstance (e.g. attending a funeral)

Following an absence from school you must ensure that within 7 days you provide your child's school with a verbal or written explanation for the absence. However, if the school has not received an explanation from you within 2 days, the school may contact you to discuss the absence.

Principals may decline to accept an explanation that you have provided if they do not believe the absence is in the best interest of your child. In these circumstances your child's absence would be recorded as unjustified. When this happens the principal will discuss their decision with you and the reasons why.

Principals may request medical certificates or other documentation when frequent or long term absences are explained as being due to illness. Principals may also seek parental permission to speak with medical specialists to obtain information to collaboratively develop a health care plan to support your child. If the request is denied, the principal can record the absences as unjustified.

Travel

Families are encouraged to travel during school holidays. If travel during school term is necessary, discuss this with your child's school principal. An *Application for Extended Leave* may need to be completed. Absences relating to travel will be marked as leave on the roll and therefore contribute to your child's total absences for the year.

In some circumstances students may be eligible to enrol in distance education for travel periods over 50 school days. This should be discussed with your child's school principal.





If a student misses as little as 8 days in a school term, by the end of primary school they'll have missed over a year of school.

**My child won't go to school.
What should I do?**

You should contact the principal as soon as possible to discuss the issue and ask for help. Strategies to help improve attendance may include a referral to the school's learning and support team or linking your child with appropriate support networks. The principal may seek further support from the Home School Liaison Program to develop an Attendance Improvement Plan.

What might happen if my child continues to have unacceptable absences?

It is important to understand that the Department of Education and Communities may be required to take further action where children of compulsory school age have recurring numbers of unexplained or unjustified absences from school.

Some of the following actions may be undertaken:

- Compulsory Schooling Conferences

You may be asked, along with your child, to attend a Compulsory Schooling Conference. The conference will help to identify the supports your child may need to have in place so they attend school regularly. The school, parents and agencies will work together to develop an agreed plan (known as Undertakings) to support your child's attendance at school.

- Application to the Children's Court – Compulsory Schooling Order

If your child's attendance at school remains unsatisfactory the Department

may apply to the Children's Court for a *Compulsory Schooling Order*. The Children's Court magistrate may order a Compulsory Schooling Conference to be convened.

- Prosecution in the Local Court

School and Department staff remain committed to working in partnership with you to address the issues which are preventing your child's full participation at school. In circumstances where a breach of compulsory schooling orders occurs further action may be taken against a parent in the Local Court. The result of court action can be the imposition of a community service order or a fine.

What age can my child leave school?

All New South Wales students must complete Year 10 or its equivalent. After Year 10, and up until they reach 17 years of age, there are a range of flexible options for students to complete their schooling.

Working in Partnership

The Department of Education and Communities recognises that working collaboratively with students and their families is the best way to support the regular attendance of students at school.

We look forward to working in partnership with you to support your child to fulfil their life opportunities.

Further information regarding school attendance can be obtained from the following websites:

Policy, information and brochures:

Please visit the Department of Education's *Policy library*

The school leaving age:

Please visit the Department of Education's *Wellbeing and Learning* website

Do you need an interpreter?

Interpreting services are available on request, including for the hearing impaired. The Telephone Interpreter Service is available 24 hours a day, seven days a week on 131 450. You will not be charged for this service.

For further advice and questions contact your educational services team

T 131 536

Learning and Engagement

Student Engagement & Interagency Partnerships

T 9244 512

www.dec.nsw.gov.au

© February 2015

NSW Department of Education and Communities

Why attendance matters

When your child misses school they miss important opportunities to...



Learn



Make friends



Build skills through fun

education.nsw.gov.au



Days missed = years lost

A day here and there doesn't seem like much, but...

When your child misses just...

they miss weeks per year

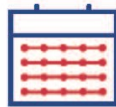
and years over their school life

1 day per fortnight



=

4 weeks



=

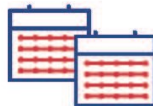
Over **1** year missed

1 day per week



=

8 weeks



=

Over **2.5** years missed

education.nsw.gov.au

3 DAY EVENT
18TH - 20TH NOVEMBER

ZERO & REWARDS CARD HOLDERS

20% OFF*
SCHOOLWEAR
& EVERYTHING ELSE!

DON'T HAVE A CARD? APPLY IN-STORE OR ONLINE & START ENJOYING THE BENEFITS

*T&C'S APPLY, SAVINGS OFF ORIGINAL PRICES. INSTORE & ONLINE



[SHOP SCHOOLS ONLINE](#)



[SHOP SCHOOLWEAR](#)

LOWES PRACTISES COVID SAFE MEASURES.

*Offer available instore & online, ends midnight (AEDT) 20/11/21. Must use Zero or Rewards card to receive discount. Excludes Gift Cards & schoolwear lay-bys. Cannot be used in conjunction with any other offer, no rainchecks.

PAY-AS-YOU-WEAR!

Flatten your expense curve by paying off your LOWES purchases over 12-months with your Zero Card.



PLUS take an EXTRA 5% OFF your purchases.

[FIND OUT MORE ABOUT LOWES ZERO CARD >](#)

Have you downloaded our free school app?



Easily access all newsletters, notes, notices, reminders, events and receive emergency alerts.

Download the  SchoolEnews app...
Search in the app store, visit the web address
or scan a QR code:



iPhone



iPad



Android



Web App

<http://apps.schoolenews.com>

You can download a free app for your phone or tablet. Keep up to date with notes and newsletters on the go. Go to your app store and search for "schoolenews" and select our school. You will have access to all lists and will receive an alert when a new note or message arrives.

School Travel for 2022



2022 school travel applications are now open

Students who need a School Opal card or travel pass for 2022 can [apply](#) now. A new application will need to be submitted if they are applying for a school travel pass for the first time, or if they are requesting an additional travel entitlement as a result of a new shared parental responsibility situation (e.g. joint custody).

Students who change address, school, campus location, or who have repeated a year or received an expiry notification from Transport for NSW for their school travel entitlement should [renew or update](#) their details before **the end of term 4**. This will ensure that schools can endorse applications and current entitlements are updated and remain valid. School Opal card holders will have the changes applied to their existing card.

If a student's distance eligibility has changed based on their grade the system will automatically update their entitlement if they meet the new criteria. If they do not meet the new [eligibility criteria](#), they will receive an expiry notification via email.

Students who have an entitlement approved under a medical condition that is due to expire will receive a notification advising them to re-apply.

[Term Bus Pass](#) holders will receive a notification to re-apply.

Students in the Opal network applying for an Opal card (including a Term Bus Pass) for the first time will receive their Student Opal card at their nominated postal address. Cards will be mailed out from January 2022.

Students living in rural and regional (R&R) areas should receive their travel pass at the start of the new school year from their nominated transport operator. It may come via the school or be sent directly to them at home. **Note:** some R&R operators do not issue travel passes. Students/parents should confirm with their nominated operator if they do not receive a pass.

School Student Transport Scheme site change

On 1 October 2021 the School Student Transport Scheme (SSTS) information and application portal was moved to **transportnsw.info**. This will assist families to find all their travel information in the one place.

Travel from Term 1 2022

We ask that parents plan ahead and make sure their child knows which service/s to use and has a valid ticket to travel; either a School Opal card or Child/Youth Opal card (within Greater Sydney) or a School Travel Pass (outside Greater Sydney), from the start of the school year.

Applications for the School Student Transport Scheme (SSTS) open at the start of Term 4 2021 for travel in 2022, so parents/students can [apply](#) or [update](#) details early and be ready for the start of the new school year.

Most students using the Opal network will not need a new Opal card and can continue travelling on their existing card each year.

The start of the year is a difficult period for local bus operators, and students travelling without a valid ticket make service planning and operations increasingly difficult.

We recognise that for some families last minute changes to school enrolments mean they may not have a School Opal card or Travel Pass for the start of term. In the Opal network, we strongly encourage these families to have their children travel on a Child/Youth Opal card until they receive their valid School Opal card. If outside Greater Sydney, parents should contact their [local bus operator](#) to discuss their travel needs.

Bus operators are flexible and understanding, particularly at the start of the school year, and will ensure students can travel safely to and from school. But to best support our operators we encourage all students to have a valid ticket, as early as possible, from the start of the school year.

Please also remember that students using Opal cards must tap on and tap off in line with the [Student code of conduct](#) and [Opal terms of use](#).



Further information can be found at transportnsw.info/travel-info/using-public-transport/school-travel

Enquiries can be submitted at transportnsw.info/contact-us/feedback/passes-concessions-feedback



UNIFORM SHOP UPDATE ANNOUNCEMENT

13th September 2021

In accordance with the current NSW Health guidelines and compliance to COVID-19 rules and restrictions, the Claudine Schoolwear retail shop at Caringbah must remain closed until further notice.

During these challenging times, our priority is the health and wellbeing of our customers and employees.

Parents can continue to shop safely with us online at www.claudineschoolwear.com.au. Rest assured that if an incorrect size is purchased, parents are entitled to a free size exchange. All online orders will be expediently processed and despatched but there may be delivery delays.

Amidst the lockdown, our office is still operating so should parents require any assistance they can contact us through the online form www.claudineschoolwear.com.au/contact.html.

Claudine Schoolwear will always follow the latest government health advice and we are here to support the school, parents and students in any way we can.

We thank our schools and parents for their understanding and continued support and look forward to welcoming them back into our Caringbah shop as soon as restrictions are lifted.

The Claudine Schoolwear Team

Sans Souci Public School

Uniform List

09/09/2021

FREE COURIER DELIVERY FOR PURCHASES OVER \$100 (orders under incur a \$9.95 delivery fee)

Please visit our website for details on future promotions

BOYS UNIFORM

Summer

		Retail Price
SHIRT:	School Blue (Midford) Short Sleeve Shirt	from \$25.00
SHORTS:	Grey Gaberdine Scags Style 120 (Regular fit, Zip Pocket with Drawcord)	from \$24.00
	Grey Gaberdine Scags Style 188 (Generous fit, Zip Pocket, Fly front, Drawcord)	from \$27.50
SOCKS:	School Stripe Sock – 1 Pair Pack	\$ 9.50

Winter

SHIRT:	School Blue (Midford) Long Sleeve Shirt	from \$30.00
TROUSERS:	Grey Scags Style 134	from \$38.00
SOCKS:	School Stripe Sock – 1 Pair Pack	\$ 9.50
	Plain Grey – 3 Pair Pack	\$ 8.00
	Plain Grey – 1 Pair Pack	\$ 3.00

GIRLS UNIFORM

Summer

TUNIC:	Regulation Summer tunic	from \$54.00
SOCKS:	White – 3 Pair Pack	\$ 8.00
	White – 1 Pair Pack	\$ 3.00
SCRUNCHIE:	Summer Tunic Scrunchie	\$ 4.00
PONY BOW:	Maroon or Summer Tunic Bow on Elastic	\$ 4.50
MATERIAL:	Only available by paid order (Minimum 1 metre)	

Winter

TUNIC:	Regulation Winter tunic	from \$56.00
BLOUSE:	White Long Sleeve Peter Pan (no white skivvy)	from \$31.00
SLACKS:	Maroon ½ Elastic Tailored Slacks (Changed from Grey in 2015) *NO BOOTLEG*	from \$41.00
STOCKINGS:	Black (cotton blend)	\$ 8.50
SOCKS:	White – 3 Pair Pack	\$ 8.00
SCRUNCHIE:	Maroon or Winter Tunic Scrunchie	\$ 4.00
PONY BOW:	Maroon or Winter Tunic Bow on Elastic	\$ 4.50
MATERIAL:	Only available by paid order (Minimum 1 metre)	

SPORT UNIFORM

POLO:	Maroon & White Polo with Emblem	{From School Only}	N/A
SHORTS:	Maroon Sport Shorts with Emblem	{From School Only}	N/A
SKORT:	Maroon Sport Skort with Emblem	{From School Only}	N/A
TRACKPANTS:	Maroon Fleecy Trackpants (SPORT ONLY)	from	\$32.50
	Girls Maroon Straight Leg Pant (Bootleg being phased out) (SPORT ONLY)		\$28.50
SOCKS:	White Sport Sock		\$ 3.50

GENERAL UNIFORM ITEMS

SLOPPY JOE:	Maroon Fleecy Vee Sloppy Joe with Emblem	\$37.50
JACKET:	Maroon Fleecy Zip Jacket with Emblem	\$43.00
	Maroon Flying Jacket with Emblem	\$60.50
HAT:	Baseball Cap with Emblem (Year 4 – Year 6)	\$11.00
	Wide Brim Hat (Kindy-Y3 – Kindergarten must Wear Bucket Hat){From School Only}	N/A

MISCELLANEOUS

PAINTSHIRTS:	With towel, an attractive way to protect your child's schoolwear	from \$21.00
RAINCOATS:	Many Styles Available (Including Clear over School Bag with coloured hood)	from \$21.00
NETBALL KNICKERS:	Girls RIO Black Boyleg shorts to wear underneath dresses – 2 Pair Pack	\$13.50
MARKERS:	Black Fine Point Fabric Marker for labelling uniforms	\$ 4.00
HAIR ACCESSORIES:	SCHOOLIES hair accessories – assorted range of accessories in school colours	\$ 4.00

#Prices are subject to change without notice

Sans Souci Public School

Kindergarten 2022 Enrolment Sale

10% OFF
ADVERTISED PRICES ON
ALL UNIFORMS#

**1ST November 2021
to
31ST December 2021
- In-store only* -**

10% Enrolment Sale is also available online in December

#Prices are subject to change without notice

*In-store sale in Nov is subject to NSW Covid Restrictions





Muscle Car WAREHOUSE



110 Rocky Point Road
KOGARAH NSW 2217
Phone: 02 9553 8965

STONE

9583 1616

Buying, Renting or Selling

Call Ray Fadel

REAL ESTATE SANS SOUCI

HEAD ACADEMY KUNG FU
UNIT 3, 50 BOX ROAD, CARINGBAH

EMPOWER YOUR CHILD

WITH OUR PROTECT PROGRAMS

Self defence, Anti-Bullying, Confidence & FUN!



SCAN TO CLAIM 2 WEEKS FREE



SANS SOUCI PUBLIC SCHOOL

CLASSES FOR
3 YRS TO TEENS



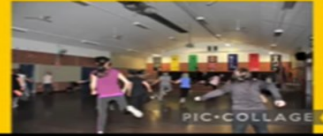
E: admin@headacademy.com.au | T: 9531 7923



OPAcize.com

Team Sans Souci went off last night! See you all next week Wed 7pm 📍 \$10 class during school terms.

By Kelly 0402332662



KAΦEINI

	SM	LG
Short Black	3.00	4.00
Long Black	3.50	4.00
Picciole	3.50	4.00
Latte	3.50	4.00
Flat White	3.50	4.00
Cappuccino	5.00	6.00
Mocha	5.00	6.00
Frappe	5.00	6.00
Freddo Cappuccino	3.50	4.00
Freddo Espresso	3.50	4.00
Greek Coffee	4.00	
Hot Chocolate		7.00
Tea		1.00

Fresh Mixed Fruit Juice (with seasonal fruit) 1.00

Extras Inc.
Soy Lactose Free
Almond Milk Extra

KAΦEINI

BREAKFAST YOUR WAY
2 Eggs, your way and 500ml yoghurt, sing honey

Tomatoes Toasted	3.00
Omelette Hashbrown	3.00
Mushrooms	4.00
Feta Cheese	3.00
Chorizo	4.50
2 Eggs, your way and 500ml yoghurt, sing honey	10.00
2 Eggs, your way and 500ml yoghurt, sing honey	4.00
2 Eggs, your way and 500ml yoghurt, sing honey	3.00
2 Eggs, your way and 500ml yoghurt, sing honey	4.50
2 Eggs, your way and 500ml yoghurt, sing honey	4.00

160 Ramsgate Rd, Ramsgate Beach
Open 7 days 6am - 4pm.
0416 143 150