

Term 4 Week 4

29th October 2021

Message from the Principal



Welcome Back!

Welcoming all students back this week has been truly fantastic. It has been heart-warming to see the boys and girls reunited with their friends and teachers and they have quickly settled back into old and new routines. Make sure you scroll down to see some fantastic photos from this week' return! Thanks to teachers and administrative staff who have been at the gates to welcome students back each morning and we are really looking forward to making the most of learning time in the short term ahead before the Christmas vacation. Our classroom teaching and support programs are back in full swing with a sharp focus on literacy and numeracy. As we have siblings leaving together in the afternoons, all classes have condensed afternoon learning sessions so that students leaving early will not be disadvantaged. I recommended that families keep an eye on the DoE Advice for Families link below for more detailed information about school operations and activities.

<https://education.nsw.gov.au/covid-19/advice-for-families>



Attendance at School

All students should be at school on the date indicated for their year group, unless they:

- have a medical certificate which says they can't return to school due to a condition or illness
- are currently unwell
- they have been asked by NSW Health to self-isolate

Student Illness

If students present with any COVID-19 symptoms, they will be sent home and should not return to school until they have received a negative test result and are symptom-free.

Returning iPads Borrowed for Learning at Home

Now that our students are back in the classroom, if you borrowed one of the school iPads during the period of Learning from Home please contact the office to arrange a drop off at school.

Students not returning in 2022

Next week a note will be sent home requesting information about students returning to school or not returning to Sans Souci PS in 2022. Please ensure you have returned this request to your child's teacher by Friday November 12.

Updating Family Contact Information

It is crucial that the school always has the current details for each student. If your family details have changed please email the school with any updates regarding:

- Residential/postal address
- Home and mobile phone numbers
- Emergency Contacts

These changes can be emailed to the school sanssouci-p.school@det.nsw.edu.au and you may also contact the school office by phone 95296123 to speak with one of the administration team.

Students Riding to School

One of the positives of lockdowns has been the increase of students riding bikes or scooters to school. The bike racks have been moved to a safe area at the west end of A Block (near the main Boulevard gate. Students riding to school must follow these procedures:

- Ensure their bike is in safe working order
- Wear a correctly fitted bicycle helmet when riding
- Walk next to the bike while on school grounds
- Walk the bike across the pedestrian crossing
- Secure their bike on the bike rack with a lock (optional)
- Students are not to touch or ride any other students' bikes



Kindergarten Orientation

With current restrictions in place our usual face to face Kindergarten Orientation Program has been postponed until the beginning of 2022. However, if restrictions lift in the next few weeks we will endeavour to hold 2 sessions for the incoming Kindergarten students in the final 3 weeks of the school term.

This year we will hold a Parent and Carer Information Session via Zoom on Wednesday 10 November. This will be broadcasted over two session times at 10am and 7pm. An email with the Zoom link will be sent to families as soon as they have submitted a completed enrolment form for their child for 2022.

Check the school website (Kindergarten 2022 tab) for further information and resources to help you and your child prepare for Kindergarten 2022. I strongly encourage all families with children starting school in 2022 to enrol as soon as possible.

Tell them from Me Surveys

This term, our school is taking part in the Tell Them From Me student survey. The survey will provide us with valuable feedback on what our students think about school life, how engaged they are with school and the different ways that teachers interact with them. Schools in Australia and around the world have used the Tell Them From Me survey to help them improve.

The survey is completed online and is run by an independent research company, *The Learning Bar* which specialises in school-based surveys. Staff in schools will not be able to identify individual students from their responses. To ensure confidentiality, participating students will receive a unique username and password. Where fewer than five students respond to a question, the results will be suppressed. The survey typically takes 30 minutes or less to complete and will be administered by the school during normal school hours. Once the surveys are completed by students, reports are prepared and in most cases are available to schools within three business days. This survey will help our school better understand how to improve student wellbeing and engagement. It will help the school identify what works to improve student outcomes.

Participating in the survey is entirely voluntary. Your child will not take part if either you or your child do not wish. If, during the survey, your child is uncomfortable, he/she can choose to stop the survey at any time. The majority of questions in the survey can be skipped. A note will be sent home next week and if you do not want your child to take part in the survey, please complete the attached form and return it to the school by Friday 5. More information about the survey and the research is available at:-

<https://education.nsw.gov.au/student-wellbeing/tell-them-from-me/information-for-parents-and-carers>

Covid Intensive Learning Support Program

Late last year the NSW Government announced that \$337 million would be spent on small group tuition in schools across the state. This was to ensure that student learning was supported following the disruptions experienced in 2020 with learning from home because of COVID-19 and in some cases drought, floods and bushfires.

The COVID intensive learning support program is focussed on the development of core content and skills in numeracy and literacy. On this basis our school has developed a tailored support program to best meet the needs of our students and a number of students are currently benefitting from these additional small group tuition sessions. Students participation in this program have their progress regularly checked and monitored through pre- and post-program assessment. This support has been in place from early in the year and has continued through the period of Learning from Home for some targeted students. The program is now back underway with face to face delivery K-6 and we look forward to measure the progress of students involved to inform future planning.

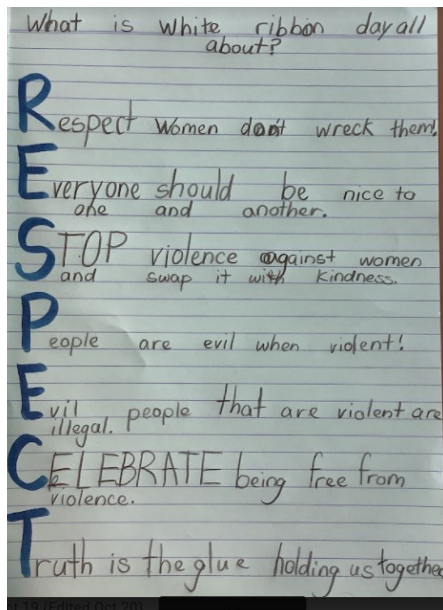
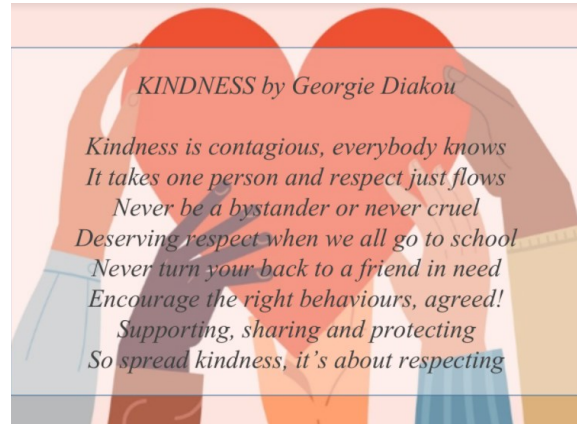
Staffing Changes

There have been a number of changes to the school staffing arrangements that will be in place for the remainder of the year:-

- Mrs Pickin will take over as 5S class teacher from Mrs Rodrigues
- Mrs Thompson will be the full time 6T class teacher (M-F)
- Mrs Overall will take over as KK class teacher from Mrs Katsimardos
- Mrs Reid will share 2P class teacher role on with Mrs Pelosi (W-Th)
- Miss Shuetrim will be K-2 support teacher (M-F)

Talented Writers @ White Ribbon Online Workshop

Last week some Stage 2 & 3 students from each class were given an opportunity to participate in a White Ribbon Day workshop online with Carlton Public School and James Cook Boys High School. The day began with a presentation by Mr Dangas who is a Youth Outreach Worker affiliated with James Cook High. He discussed the importance of respectful relationships, White Ribbon Day and what we can do to make a difference. Each group of students then completed a poetry workshop online with English teachers from James Cook. They learnt about emotive language and how to write an acrostic poem. Students then worked with Mrs Pontifex and Mrs Watson online to complete their own White Ribbon Day Acrostic poems. This learning opportunity was very inspiring and the students involved were highly engaged throughout the whole day. We hope to make this an annual event involving more schools from our Kogarah Network next year.



Ethan Milionis 4C

Looking into someone's glaring green eyes and caring about what they're saying.

Installing all the things they said in your head.

Silence yourself while they're talking to you, your friends and people around you.

Think about who you're going to fling this information you're hearing at.

Enjoy listening to who you're listening to.

Never throw spanners at a speaker, it is known as bad manners.



Outstanding Semester 1 Artwork from Stage 2 and 3

Below is a sample of the outstanding artwork produced by Stage 2 and 3 students in Semester 1. Mrs Hawkins has displayed the artwork in the A Block corridor for our students to admire. We are now looking forward to seeing what our K-2 students will produce this term!



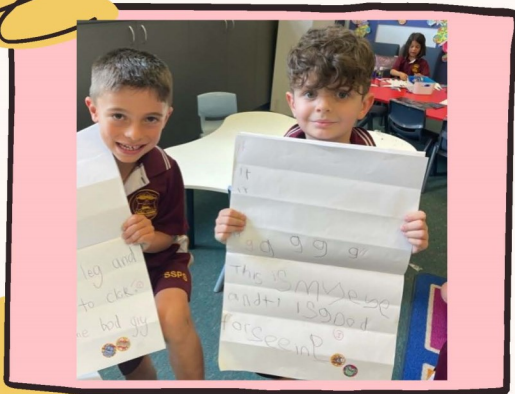
KINDERGARTEN



KINDERGARTEN



KINDERGARTEN





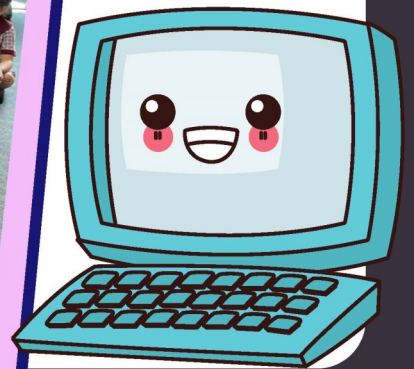
Stage 1



1/2T - Writing



1P - Think Pair Share





1E - Writing



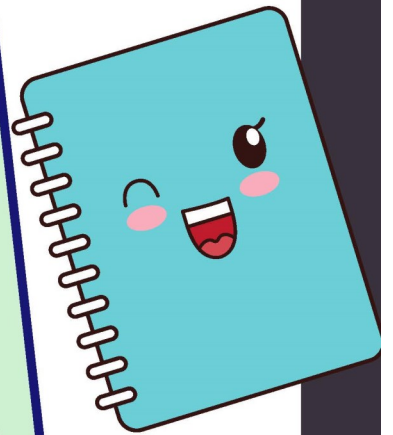
1M - Reading Groups



1K - Welcome Back



2P - Maths Games





2E- Reading



2R- Welcome Back



WELCOME BACK, STAGE 2!

-3T-

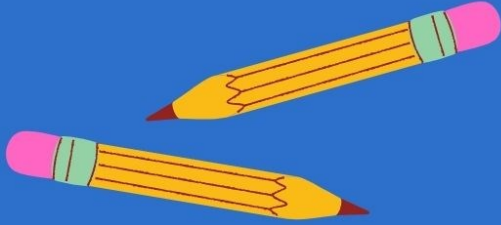


-3N-





- 3P-



- 4C-

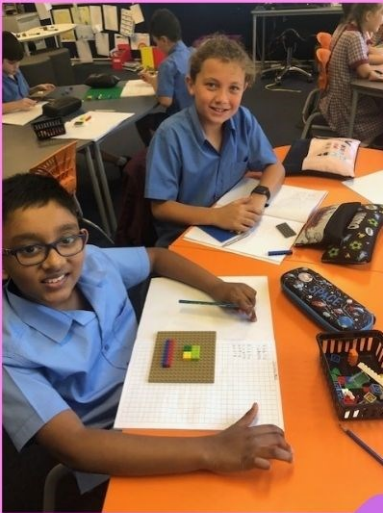




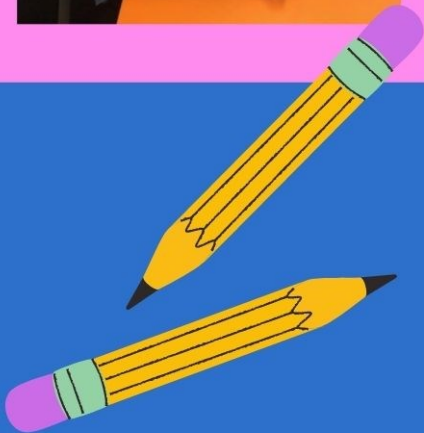
- 4T -



back to
School



- 4D -





STAGE 3

ARE EXCITED TO
BE BACK AT
SCHOOL !!!



Have you downloaded our free school app?



Easily access all newsletters, notes, notices, reminders, events and receive emergency alerts.

Download the  SchoolEnews app...
Search in the app store, visit the web address
or scan a QR code:



iPhone



iPad



Android



Web App

<http://apps.schoolenews.com>

You can download a free app for your phone or tablet. Keep up to date with notes and newsletters on the go. Go to your app store and search for "schoolenews" and select our school. You will have access to all lists and will receive an alert when a new note or message arrives.

Returning to School after Lockdown and Isolation

You and your child might be worried about heading back to school. Below is some information and strategies for you and your family to use to get ready for a return to school.



Talking to your child is one of the best ways to work through fears and anxieties. Use language they can understand to discuss returning to school. This is an excerpt and image above from [DHHS Victoria](#).

Early Primary School

- Balance plans to return to school with reassurances that their schools and homes are safe
- Remind them that adults are there to keep them healthy and to take care of them
- Discuss handwashing as a step in staying healthy at school and home
- Use language such as 'adults are working hard to keep you safe'



Plan Ahead: Check uniforms, equipment, bags and other resources.



Name the possible support people at school, home or care.

Upper Primary School

- They may be more vocal in asking questions about whether they truly are safe and what will happen if COVID-19 comes to their school or community
- They may need assistance separating reality from rumour and fantasy
- Discuss efforts of school and community leaders to prevent germs from spreading



Talk to your child about going back to school and that things may look different.



If you are concerned that your child is not coping, seek further help. See details on the next page.

High School

- They may be able to discuss COVID-19 in a more in-depth fashion and can be referred directly to appropriate sources of information
- Provide honest, accurate information about the current status of their schooling. Having such knowledge can help them feel a sense of control
- Plan together what the return to school will look like



Eat well, sleep well and be active.



Take care of yourself and acknowledge the difficulties you have been through.

School Travel for 2022



2022 school travel applications are now open

Students who need a School Opal card or travel pass for 2022 can [apply](#) now. A new application will need to be submitted if they are applying for a school travel pass for the first time, or if they are requesting an additional travel entitlement as a result of a new shared parental responsibility situation (e.g. joint custody).

Students who change address, school, campus location, or who have repeated a year or received an expiry notification from Transport for NSW for their school travel entitlement should [renew or update](#) their details before **the end of term 4**. This will ensure that schools can endorse applications and current entitlements are updated and remain valid. School Opal card holders will have the changes applied to their existing card.

If a student's distance eligibility has changed based on their grade the system will automatically update their entitlement if they meet the new criteria. If they do not meet the new [eligibility criteria](#), they will receive an expiry notification via email.

Students who have an entitlement approved under a medical condition that is due to expire will receive a notification advising them to re-apply.

[Term Bus Pass](#) holders will receive a notification to re-apply.

Students in the Opal network applying for an Opal card (including a Term Bus Pass) for the first time will receive their Student Opal card at their nominated postal address. Cards will be mailed out from January 2022.

Students living in rural and regional (R&R) areas should receive their travel pass at the start of the new school year from their nominated transport operator. It may come via the school or be sent directly to them at home. **Note:** some R&R operators do not issue travel passes. Students/parents should confirm with their nominated operator if they do not receive a pass.

School Student Transport Scheme site change

On 1 October 2021 the School Student Transport Scheme (SSTS) information and application portal was moved to **transportnsw.info**. This will assist families to find all their travel information in the one place.

Travel from Term 1 2022

We ask that parents plan ahead and make sure their child knows which service/s to use and has a valid ticket to travel; either a School Opal card or Child/Youth Opal card (within Greater Sydney) or a School Travel Pass (outside Greater Sydney), from the start of the school year.

Applications for the School Student Transport Scheme (SSTS) open at the start of Term 4 2021 for travel in 2022, so parents/students can [apply](#) or [update](#) details early and be ready for the start of the new school year.

Most students using the Opal network will not need a new Opal card and can continue travelling on their existing card each year.

The start of the year is a difficult period for local bus operators, and students travelling without a valid ticket make service planning and operations increasingly difficult.

We recognise that for some families last minute changes to school enrolments mean they may not have a School Opal card or Travel Pass for the start of term. In the Opal network, we strongly encourage these families to have their children travel on a Child/Youth Opal card until they receive their valid School Opal card. If outside Greater Sydney, parents should contact their [local bus operator](#) to discuss their travel needs.

Bus operators are flexible and understanding, particularly at the start of the school year, and will ensure students can travel safely to and from school. But to best support our operators we encourage all students to have a valid ticket, as early as possible, from the start of the school year.

Please also remember that students using Opal cards must tap on and tap off in line with the [Student code of conduct](#) and [Opal terms of use](#).



Further information can be found at transportnsw.info/travel-info/using-public-transport/school-travel

Enquiries can be submitted at transportnsw.info/contact-us/feedback/passes-concessions-feedback



UNIFORM SHOP UPDATE ANNOUNCEMENT

13th September 2021

In accordance with the current NSW Health guidelines and compliance to COVID-19 rules and restrictions, the Claudine Schoolwear retail shop at Caringbah must remain closed until further notice.

During these challenging times, our priority is the health and wellbeing of our customers and employees.

Parents can continue to shop safely with us online at www.claudineschoolwear.com.au. Rest assured that if an incorrect size is purchased, parents are entitled to a free size exchange. All online orders will be expediently processed and despatched but there may be delivery delays.

Amidst the lockdown, our office is still operating so should parents require any assistance they can contact us through the online form www.claudineschoolwear.com.au/contact.html.

Claudine Schoolwear will always follow the latest government health advice and we are here to support the school, parents and students in any way we can.

We thank our schools and parents for their understanding and continued support and look forward to welcoming them back into our Caringbah shop as soon as restrictions are lifted.

The Claudine Schoolwear Team

Sans Souci Public School

Uniform List

09/09/2021

FREE COURIER DELIVERY FOR PURCHASES OVER \$100 (orders under incur a \$9.95 delivery fee)

Please visit our website for details on future promotions

BOYS UNIFORM

Summer

		Retail Price
SHIRT:	School Blue (Midford) Short Sleeve Shirt	from \$25.00
SHORTS:	Grey Gaberdine Scags Style 120 (Regular fit, Zip Pocket with Drawcord)	from \$24.00
	Grey Gaberdine Scags Style 188 (Generous fit, Zip Pocket, Fly front, Drawcord)	from \$27.50
SOCKS:	School Stripe Sock – 1 Pair Pack	\$ 9.50

Winter

SHIRT:	School Blue (Midford) Long Sleeve Shirt	from \$30.00
TROUSERS:	Grey Scags Style 134	from \$38.00
SOCKS:	School Stripe Sock – 1 Pair Pack	\$ 9.50
	Plain Grey – 3 Pair Pack	\$ 8.00
	Plain Grey – 1 Pair Pack	\$ 3.00

GIRLS UNIFORM

Summer

TUNIC:	Regulation Summer tunic	from \$54.00
SOCKS:	White – 3 Pair Pack	\$ 8.00
	White – 1 Pair Pack	\$ 3.00
SCRUNCHIE:	Summer Tunic Scrunchie	\$ 4.00
PONY BOW:	Maroon or Summer Tunic Bow on Elastic	\$ 4.50
MATERIAL:	Only available by paid order (Minimum 1 metre)	

Winter

TUNIC:	Regulation Winter tunic	from \$56.00
BLOUSE:	White Long Sleeve Peter Pan (no white skivvy)	from \$31.00
SLACKS:	Maroon ½ Elastic Tailored Slacks (Changed from Grey in 2015) *NO BOOTLEG*	from \$41.00
STOCKINGS:	Black (cotton blend)	\$ 8.50
SOCKS:	White – 3 Pair Pack	\$ 8.00
SCRUNCHIE:	Maroon or Winter Tunic Scrunchie	\$ 4.00
PONY BOW:	Maroon or Winter Tunic Bow on Elastic	\$ 4.50
MATERIAL:	Only available by paid order (Minimum 1 metre)	

SPORT UNIFORM

POLO:	Maroon & White Polo with Emblem	(From School Only) N/A
SHORTS:	Maroon Sport Shorts with Emblem	(From School Only) N/A
SKORT:	Maroon Sport Skort with Emblem	(From School Only) N/A
TRACKPANTS:	Maroon Fleecy Trackpants (SPORT ONLY)	from \$32.50
	Girls Maroon Straight Leg Pant (Bootleg being phased out) (SPORT ONLY)	\$28.50
SOCKS:	White Sport Sock	\$ 3.50

GENERAL UNIFORM ITEMS

SLOPPY JOE:	Maroon Fleecy Vee Sloppy Joe with Emblem	\$37.50
JACKET:	Maroon Fleecy Zip Jacket with Emblem	\$43.00
	Maroon Flying Jacket with Emblem	\$60.50
HAT:	Baseball Cap with Emblem (Year 4 – Year 6)	\$11.00
	Wide Brim Hat (Kindy-Y3 – Kindergarten must Wear Bucket Hat)(From School Only)	N/A

MISCELLANEOUS

PAINTSHIRTS:	With towel, an attractive way to protect your child's schoolwear	from \$21.00
RAINCOATS:	Many Styles Available (Including Clear over School Bag with coloured hood)	from \$21.00
NETBALL KNICKERS:	Girls RIO Black Boyleg shorts to wear underneath dresses – 2 Pair Pack	\$13.50
MARKERS:	Black Fine Point Fabric Marker for labelling uniforms	\$ 4.00
HAIR ACCESSORIES:	SCHOOLIES hair accessories – assorted range of accessories in school colours	\$ 4.00

#Prices are subject to change without notice

Sans Souci Public School

Kindergarten 2022 Enrolment Sale

10% OFF
ADVERTISED PRICES ON
ALL UNIFORMS#

**1ST November 2021
to
31ST December 2021
- In-store only* -**

10% Enrolment Sale is also available online in December

#Prices are subject to change without notice

*In-store sale in Nov is subject to NSW Covid Restrictions





Muscle Car WAREHOUSE



110 Rocky Point Road
KOGARAH NSW 2217
Phone: 02 9553 8965

STONE

9583 1616

Buying, Renting or Selling

Call Ray Fadel

REAL ESTATE SANS SOUCI

HEAD ACADEMY KUNG FU
UNIT 3, 50 BOX ROAD, CARINGBAH

EMPOWER YOUR CHILD

WITH OUR PROTECT PROGRAMS

Self defence, Anti-Bullying, Confidence & FUN!



SCAN TO CLAIM 2 WEEKS FREE



SANS SOUCI PUBLIC SCHOOL

CLASSES FOR
3 YRS TO TEENS

E: admin@headacademy.com.au | T: 9531 7923



OPAcize.com

Team Sans Souci went off last night! See you all next week Wed 7pm 📍 \$10 class during school terms.

By Kelly 0402332662



PIC-COLLAGE

KAΦEINI

	SM	LG
Short Black	3.00	4.00
Long Black	3.50	4.00
Piccolo	3.50	4.00
Latte	3.50	4.00
Flat White	3.50	4.00
Cappuccino	5.00	6.00
Mocha	5.00	6.00
Frappe	5.00	6.00
Freddo Cappuccino	3.50	4.00
Freddo Espresso	3.50	4.00
Greek Coffee	4.00	
Hot Chocolate	7.00	
Tea		1.00

Fresh Mixed Fruit Juice (with seasonal fruit) 1.00

Extras Inc.
Soy Lactose Free
Almond Milk Extra

KAΦEINI

BREAKFAST YOUR WAY
2 Eggs, your way and 500g dough

Tomatoes Toasted	3.00
Chilled Haloumi	3.00
Mushrooms	4.00
Feta Cheese	3.00
Chorizo	4.50
2 Eggs, your way and 500g dough	10.00
2 Eggs, your way and 500g dough	4.00
2 Eggs, your way and 500g dough	3.00
2 Eggs, your way and 500g dough	4.50
2 Eggs, your way and 500g dough	4.00

KAΦEINI

160 Ramsgate Rd, Ramsgate Beach
Open 7 days 6am - 4pm.
0416 143 150