

Dates to remember:

Wed 25 May Zone Cross Country
Friday 3 June Kindergarten 2023 Tour

Term 2 Week 4

20th May 2022

Message from the Principal

Supporting Improvement in Student Learning Outcomes

5 Steps to Problem Solving Program

In early Term 1, teachers across Year 3-6 administered research-based assessments including the Check-In mathematics assessment and the Department of Education Stage-based mathematics assessment in their class.

During stage meetings teachers collaboratively analysed the data collected in the mathematics assessments. Teachers used this data to look for any trends in student learning. Teachers were able to use the data to pinpoint areas of concern in student learning through the assessments.

All teachers agreed that problem-solving strategies and skills, as well as mathematics vocabulary were areas of concern and needed to be addressed in our teaching and learning programs.

As a result, Stage 2 and Stage 3 teachers, Mrs Dobosz, Mr Thornton, Mr Hoff and Mrs Rodrigues collaborated with Mrs Williamson, Assistant Principal Curriculum Implementation (APCI) to develop and design a differentiated stage-based problem solving program to be implemented and embedded in our current mathematics teaching programs. All teachers received professional learning in teaching problem solving strategies and skills and are now prepared to explicitly teach the 5 Steps to problem program to their students. The program began this term with a pre-assessment and students will participate in a post assessment late term 3 to support teachers in effectively evaluating the success of the 5 Steps to problem solving program.

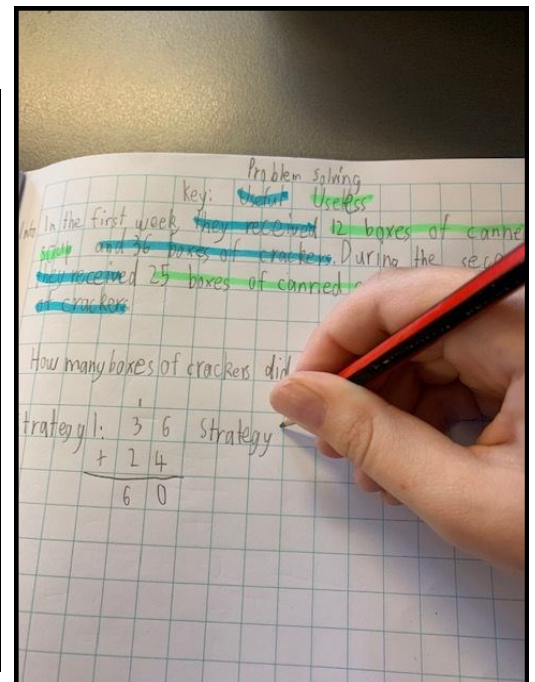
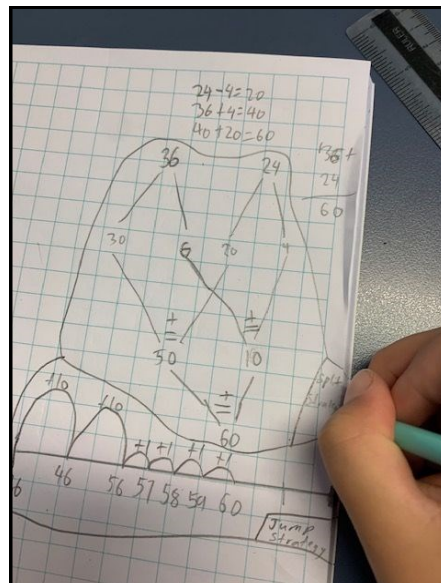
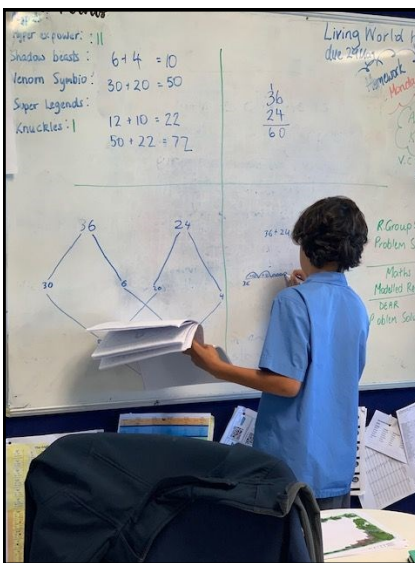
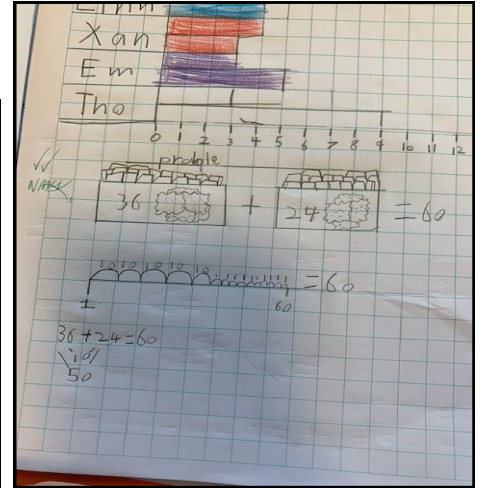
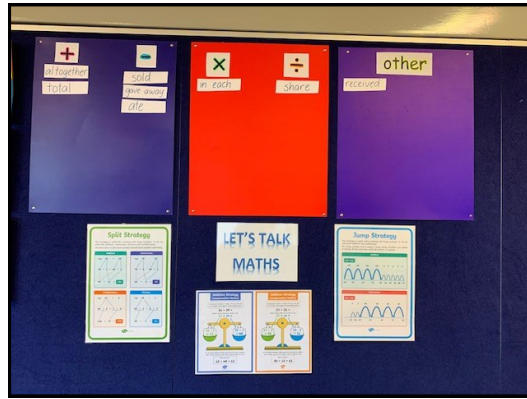
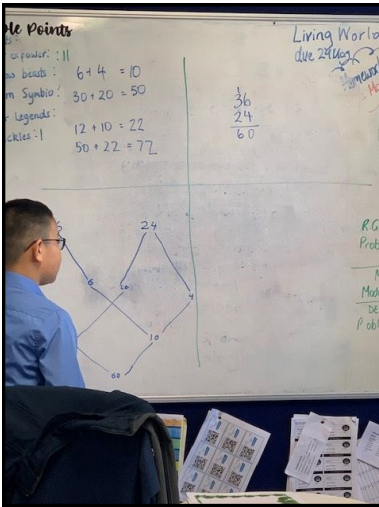
5 Steps to problem solving

- **READ**
- **UNDERSTAND**
- **CHOOSE A STRATEGY**
- **USE A STRATEGY**
- **CHECK**

The photos below reflect students engaging in

STEP 4 - USE A STRATEGY to solve the word problem

- On the board students are modelling the different strategies they chose and used to solve the word problem



Sans Souci PS in the Media Spotlight

Our school was invited to share progress about how the collection and analysis of Check-In data has assisted teachers to tailor learning programs to student needs at SPSS. Mrs Williamson was interviewed by the SMH last weekend and again by Channel 7 with some of our Year 6 students on Tuesday to share the progress we have made since the lockdown periods of 2021. There are some pictures further on in this newsletter.



Please see Channel 7 and Sydney Morning Herald link:

https://fb.watch/d49NVE_N_C/

<https://www.smh.com.au/national/nsw/high-school-students-hit-hardest-by-covid-closures-new-data-shows-20220516-p5almx.html>

Focus on Student Attendance

NSW Department of Education

Why attendance matters

When your child misses school they miss important opportunities to...



Learn



Make friends



Build skills through fun

education.nsw.gov.au



Regular attendance at school for every student is essential if students are to achieve their potential, and increase their career and life options. Schools in partnerships with parents are responsible for promoting the regular attendance of students. While parents are legally responsible for the regular attendance of their children, school staff, as part of their duty of care, record and monitor part and whole day absences.

Parents are required to explain the absences of their children from school promptly and within seven days to the school.

As part of our Strategic Improvement Plan Sans Souci PS will be working on:

- increasing our overall attendance percentage.

School data from 2000 shows 73.9% of students were attending 90% of the time with 13% of students attending less than 82% of the time.

- We are aiming to increase this to 86.4% by the end of 2022 and 91.4% by the end of 2024


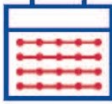

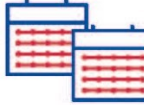
We understand that the pandemic has had a significant impact on attendance rates in the past 2-3 years but hopefully as things get back to normal will reach our targets and optimise every moment of learning for the students of SSPS.

The school is also looking at reducing the incidence of partial attendance at school. Ensuring your child is at school prior to 9:15 am every school day is crucial and making medical appointments outside of school hours also contributes to more full day attendance.

There will be further information on compulsory school attendance later in this newsletter.

Days missed = years lost

A day here and there doesn't seem like much, but...

When your child misses just...	they miss weeks per year	and years over their school life
1 day per fortnight 	= 4 weeks 	= Over 1 year missed
1 day per week 	= 8 weeks 	= Over 2.5 years missed

education.nsw.gov.au

NAPLAN

Over the past 2 weeks students in Year 3 and Year 5 have participated in the NAPLAN. This year all of the assessments will be completed online except for the Year 3 writing. A big thank you to Mr Callaghan, Mr Thornton and Miss Noonan who have been coordinating the online assessments with the support of classroom teachers and students have been accessing computers in the library. The assessments have run smoothly and students have enjoyed participating in the online experience. Most of the students who were absent for one or more of the assessment tasks have completed these in catch up sessions over the week. Thanks also to Mrs Holmes who relocated her library lessons to classrooms while the assessments took place.

Kindergarten News

Thanks to relieving Assistant Principal Mrs Willoughby and the Kindergarten teachers for presenting a parent information session about Home Reading for parents and carers last Monday evening.

Botany Bay Zone Cross Country Carnival

Next Wednesday 19 May, 32 students will represent SSPS in the Botany Bay Zone Cross Country Carnival at Scarborough Park Ramsgate. Mr Hoff has been training the team each morning and we are looking good for a strong showing on Wednesday. Best of luck to all runners and we hope to bring home the champion school trophy once again!

Year 6 Cake and Bake Stall and volunteers for Election Day

A huge thank you to everyone who donated sweet treats for the Year 6 Cake Stall on Election Day! Thanks to Mrs Mougios and Mrs Tsiorvas and all the volunteers who graciously offered to help out on Friday and Saturday. We will update the community with the amount of money raised towards Year 6 fundraising next week!

Don't forget to cast your vote tomorrow at Sans Souci PS and remember to bring some cash to buy a treat at our Cake and Bake stall! All proceeds go towards the Year 6 end of year activities:)



National Walk Safely to School Day

Now in its 23rd year, National Walk Safely to School Day (WSTSD) is an annual event when all Primary School children will be encouraged to walk and commute safely to school. It is a Community Event seeking to promote Road Safety, Health, Public Transport and the Environment. Unfortunately today's weather wasn't very inviting for a walk to school but thanks to all families that try to walk at least part of the way to school each day. This is an important part of improving the safety of all



The objectives of WSTSD are:

- To encourage parents and carers to walk to school with primary school age children and reinforce safe pedestrian behaviour.
- To promote the health benefits of walking and help create regular walking habits at an early age.
- To ensure that children up to 10 years old hold an adult's hand when crossing the road.
- To help children develop the vital road-crossing skills they will need as they become mature pedestrians.
- To reduce the car dependency habits that are being created at an early age and which will be difficult to change as children become adults.
- To promote the use of Public Transport.
- To reduce the level of air pollution created by motor vehicles.
- To reduce the level of traffic congestion.

Road Safety Survey

The SSPS P&C Road Safety Committee is currently working on some initiatives to improve road safety around the school. We have put together a survey for families to complete, which will help us prioritise these initiatives. We will be presenting the results from this survey at a meeting with Georges River Council and Transport for NSW in a few weeks' time. We would greatly appreciate it if you could complete this survey by **5pm Friday 21 May** - it will take approximately 5-10 minutes of your time.

It has been a fabulous response so far with over 100 families taking part! All families who submit a completed survey will go in the draw to win a **\$100 Claudine's gift voucher**.

Thank you for your contribution! The Road Safety Committee.

The link below will take you directly to the survey:)

https://docs.google.com/forms/d/1BaerEmKZ0fwwgV-E_nQaMsfGKDt_4bkvMarPeOQdd4U/edit

Dangerous Parking

There have been a number of concerning reports about dangerous and irresponsible parking especially at the back of the school at pick-up time. I can't imagine any parents or carers out there who would wish any harm on any of the SSPS children but some of the behaviour recently could easily put our students at risk. Parents and carers who double park, park in bus zones (see below) and across driveways, stop in No Stopping zones or leave their car unattended in restricted parking zones or in disabled parking spaces (without a valid exemption) are putting the students and community members of SSPS at risk of serious harm. The Georges River Council and local Police Highway Patrol conduct random visits to the vicinity of the school and will enforce local parking and traffic regulations.



K-2 Principal's Gold Awards



3-6 Principal's Gold Awards



KINDERGARTEN







STAGE ONE



1P Science

This week 1P enjoyed looking closer to discover the features of plants! We then wrote and labeled a diagram in our books.



1E



1E have had lots of fun using magnifying glasses to examine the different features of plants. In maths, we have been learning about place value.

2V



2V have been busy learning about plants in science as well as forming arrays and groups in maths.



2S



This week 2S have been having fun in maths learning about estimating the area of different shapes and objects.



Stage 2 Lunchtime

Games



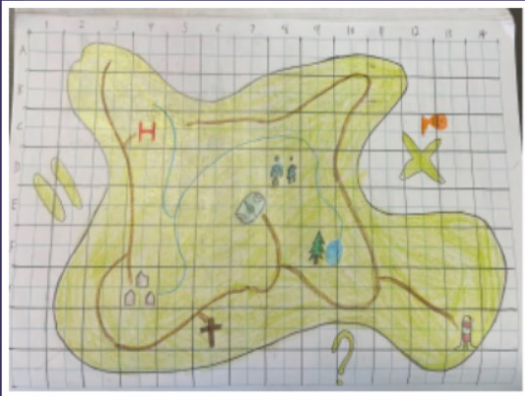
Tuesdays
at
Lunch

LEGO WEDO WITH STAGE 2

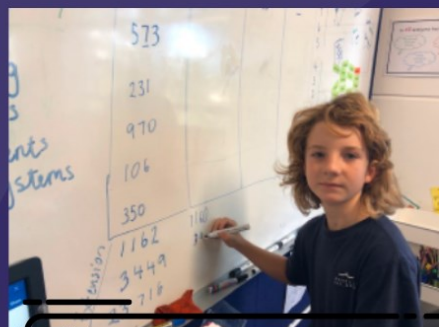
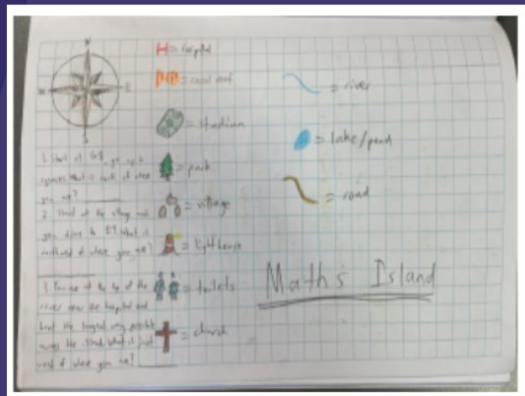




STAGE 2 QUALITY WORK



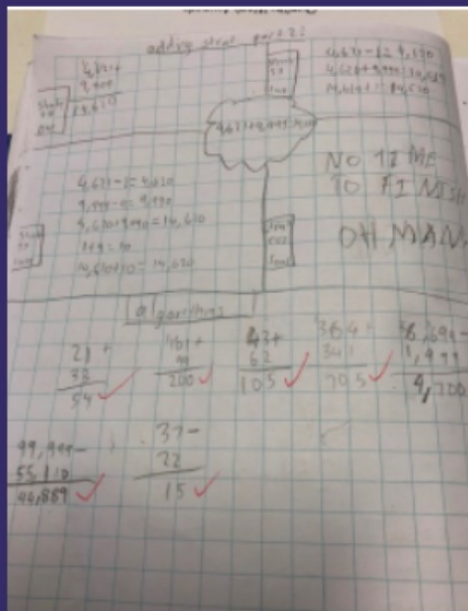
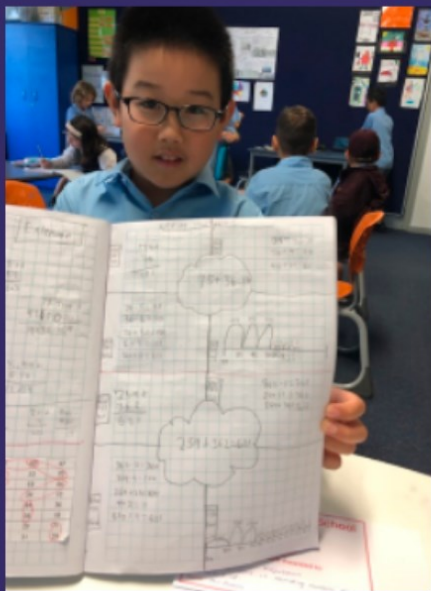
Zara B- 4C



Daniel U- 4D

Jan	March	Thursdays
13410	163160	2300x 2000
52160	1502100	1600x 2000
51160	246x 200	4200x 4000
44280	168x 500	5300x 5000
78180	372x 100	7640x 8000
68170	55x 800	8290x 8000
16120	261x 800	8292x 8290
34430	857x 100	
86140		

Bowen Y- 4C



Angus Q- 4D



Nick, Petar & Marcus- 3/4K



Stage 3 H - TEAM

On Friday the 13th of May Stage 3 watched a drama performance by Brainstorm Productions called the H Team. The play was about two H team members called Minty and Khal. They both had positive mindsets to stay in the H zone which stands for health and harmony.

Later in the play, they got zapped into Australia which took them away from the H Zone and their team up in the sky. Australia was a danger zone to them filled with junk food and screens which was quite the challenge for them as they had both lost their positive mindsets. Khal got stuck inside the body of a boy called Kenny as he learned the dangers of junk food and gaming. Minty then went to save Khal but got tricked by the ad man.

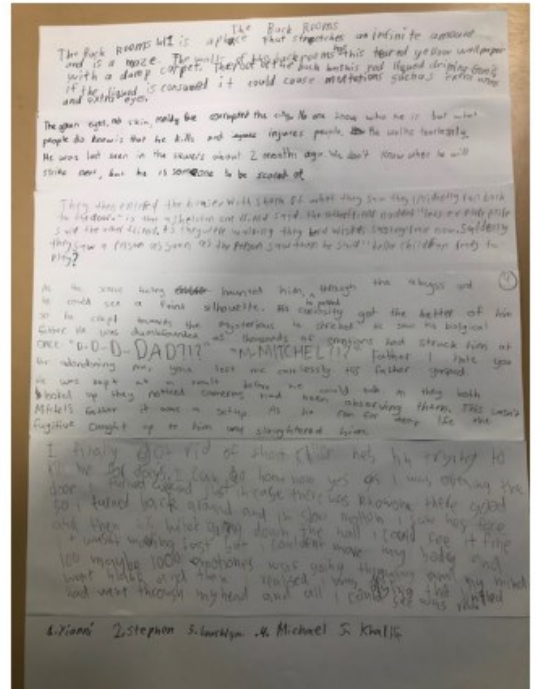
They then went on a quest to defeat a guy called the ad man who had stolen their controls to get back to the H Zone up in the sky. They got back to the H Zone in the end and learned how to be a healthy and safe child in Australia.

Everyone enjoyed watching the play and the play was very engaging. We all had fun doing chants as Minty and Khal journeyed on to face the ad man. The moral of the play was to stay healthy and exercise and to stay safe from cyber safety. All in all Stage 3 loved everything about the performance and had an excellent time!

By Hansen & Harrison 6W



High School for a Day...





Cake Shop



Reminder: Year 6 Cake & Bake Stall Federal Election - Saturday, 21 May

We are seeking donations of freshly baked treats for our Cake & Bake stall.

Cakes, biscuits, scones, slices, jams, bread...you name it, we will accept it!

Please ensure items do not require refrigeration.

Drop off at the ART ROOM from 8:30 am on Friday 20 May, or to the canteen on Saturday morning 21 May.

Please bring baked goods wrapped and labelled or in disposable packaging ready to sell.

100% of sales will support the 2022 Year 6 farewell.

Kind Regards
Year 6 Students and Teachers



Good News Article



A fan of check-ins: Felicity Williamson with students Budd Corser, Emily Walsh and Jayla Mougios. EDWINA PICKLES

The Assistant Principal, Curriculum and Implementation at Sans Souci Public School, Felicity Williamson, said the check-in assessment was useful in not only measuring how students had fared during remote learning, but also in pinpointing the areas in which they struggled.

"Once you implement the assessment you get feedback straight away," she said. "Then we triangulated all our data, and now we've got some programs in place."





Compulsory school attendance

| Information for parents

Education for your child is important and regular attendance at school is essential for your child to achieve their educational best and increase their career and life options. NSW public schools work in partnership with parents to encourage and support regular attendance of children and young people. When your child attends school every day, learning becomes easier and your child will build and maintain friendships with other children.

What are my Legal responsibilities?

Education in New South Wales is compulsory for all children between the ages of six years and below the minimum school leaving age of 17 years. The Education Act 1990 requires that parents ensure their children of compulsory school age are enrolled at, and regularly attend school, or, are registered with the NSW Education and Standards Authority for home schooling.

Once enrolled, children are required to attend school each day it is open for students.

The Importance of arriving on time

Arriving at school and class on time:

- Ensures that students do not miss out on important learning activities scheduled early in the day
- Helps students learn the importance of punctuality and routine
- Give students time to greet their friends before class
- Reduces classroom disruption

Lateness is recorded as a partial absence and must be explained by parents.

What if my child has to be away from school?

On occasion, your child may need to be absent from school. Justified reasons for student absences may include:

- being sick, or having an infectious disease
- having an unavoidable medical appointment
- being required to attend a recognised religious holiday
- exceptional or urgent family circumstance (e.g. attending a funeral)

Following an absence from school you must ensure that within 7 days you provide your child's school with a verbal or written explanation for the absence. However, if the school has not received an explanation from you within 2 days, the school may contact you to discuss the absence.

Principals may decline to accept an explanation that you have provided if they do not believe the absence is in the best interest of your child. In these circumstances your child's absence would be recorded as unjustified. When this happens the principal will discuss their decision with you and the reasons why.

Principals may request medical certificates or other documentation when frequent or long term absences are explained as being due to illness. Principals may also seek parental permission to speak with medical specialists to obtain information to collaboratively develop a health care plan to support your child. If the request is denied, the principal can record the absences as unjustified.

Travel

Families are encouraged to travel during school holidays. If travel during school term is necessary, discuss this with your child's school principal. An Application for Extended Leave may need to be completed. Absences relating to travel will be marked as leave on the roll and therefore contribute to your child's total absences for the year.

In some circumstances students may be eligible to enrol in distance education for travel periods over 50 school days. This should be discussed with your child's school principal.

My child won't go to school what should I do?

You should contact the principal as soon as possible to discuss the issue and ask for help. Strategies to help improve attendance may include a referral to the school's learning and support team or linking your child with appropriate support networks. The principal may seek further support from the Home School Liaison Program to develop an Attendance Improvement Plan.

What might happen if my child continues to have unacceptable absences?

It is important to understand that the Department of Education may be required to take further action where children of compulsory school age have recurring numbers of unexplained or unjustified absences from school.

Some of the following actions may be undertaken:

- **Compulsory Schooling Conferences**

You may be asked, along with your child, to attend a Compulsory Schooling Conference. The conference will help to identify the supports your child may need to have in place so they attend school regularly. The school, parents and agencies will work together to develop an agreed plan (known as Undertakings) to support your child's attendance at school.

- **Application to the Children's Court – Compulsory Schooling Order**

If your child's attendance at school remains unsatisfactory the Department may apply to the Children's Court for a Compulsory Schooling Order. The Children's Court magistrate may order a Compulsory Schooling Conference to be convened.

- **Prosecution in the Local Court**

School and Department staff remain committed to working in partnership with you to address the issues which are preventing your child's full participation at school. In circumstances where a breach of compulsory schooling orders occurs further action may be taken against a parent in the Local Court. The result of court action can be the imposition of a community service order or a fine.

What age can my child leave school?

All New South Wales students must complete Year 10 or its equivalent. After Year 10, and up until they reach 17 years of age, there are a range of flexible options for students to complete their schooling.

Working in Partnership

The NSW Department of Education recognises that working collaboratively with students and their families is the best way to support the regular attendance of students at school.

We look forward to working in partnership with you to support your child to fulfil their life opportunities.

Days missed = years lost

A day here and there doesn't seem like much, but...



More information

Further Information regarding school attendance can be obtained from the following websites:

Policy, information and brochures:

Please visit the Department of Education's Policy Library AND The Department's Attendance Matters Website

The school leaving age:

Please visit the Department of Education's Wellbeing and Learning website

Do you need an interpreter?

Interpreting services are available on request, including for the hearing impaired. The Telephone Interpreter Service is available 24 hours a day, seven days a week on **131 450**. You will not be charged for this service.

Compulsory School Attendance

Information for parents

Education for your child is important and regular attendance at school is essential for your child to achieve their educational best and increase their career and life options. NSW public schools work in partnership with parents to encourage and support regular attendance of children and young people. When your child attends school every day, learning becomes easier and your child will build and maintain friendships with other children.

What are my legal responsibilities?

Education in New South Wales is compulsory for all children between the ages of six years and below the minimum school leaving age. The *Education Act 1990* requires that parents ensure their children of compulsory school age are enrolled at, and regularly attend school, or, are registered with the Board of Studies, Teaching and Educational Standards for homeschooling.

Once enrolled, children are required to attend school each day it is open for students.

The importance of arriving on time

Arriving at school and class on time:

- Ensures that students do not miss out on important learning activities scheduled early in the day
- Helps students learn the importance of punctuality and routine
- Give students time to greet their friends before class
- Reduces classroom disruption

Lateness is recorded as a partial absence and must be explained by parents.

What if my child has to be away from school?

On occasion, your child may need to be absent from school. Justified reasons for student absences may include:

- being sick, or having an infectious disease
- having an unavoidable medical appointment
- being required to attend a recognised religious holiday
- exceptional or urgent family circumstance (e.g. attending a funeral)

Following an absence from school you must ensure that within 7 days you provide your child's school with a verbal or written explanation for the absence. However, if the school has not received an explanation from you within 2 days, the school may contact you to discuss the absence.

Principals may decline to accept an explanation that you have provided if they do not believe the absence is in the best interest of your child. In these circumstances your child's absence would be recorded as unjustified. When this happens the principal will discuss their decision with you and the reasons why.

Principals may request medical certificates or other documentation when frequent or long term absences are explained as being due to illness. Principals may also seek parental permission to speak with medical specialists to obtain information to collaboratively develop a health care plan to support your child. If the request is denied, the principal can record the absences as unjustified.

Travel

Families are encouraged to travel during school holidays. If travel during school term is necessary, discuss this with your child's school principal. An *Application for Extended Leave* may need to be completed. Absences relating to travel will be marked as leave on the roll and therefore contribute to your child's total absences for the year.

In some circumstances students may be eligible to enrol in distance education for travel periods over 50 school days. This should be discussed with your child's school principal.





If a student misses as little as 8 days in a school term, by the end of primary school they'll have missed over a year of school.

My child won't go to school. What should I do?

You should contact the principal as soon as possible to discuss the issue and ask for help. Strategies to help improve attendance may include a referral to the school's learning and support team or linking your child with appropriate support networks. The principal may seek further support from the Home School Liaison Program to develop an Attendance Improvement Plan.

What might happen if my child continues to have unacceptable absences?

It is important to understand that the Department of Education and Communities may be required to take further action where children of compulsory school age have recurring numbers of unexplained or unjustified absences from school.

Some of the following actions may be undertaken:

- Compulsory Schooling Conferences

You may be asked, along with your child, to attend a Compulsory Schooling Conference. The conference will help to identify the supports your child may need to have in place so they attend school regularly. The school, parents and agencies will work together to develop an agreed plan (known as Undertakings) to support your child's attendance at school.

- Application to the Children's Court – Compulsory Schooling Order

If your child's attendance at school remains unsatisfactory the Department

may apply to the Children's Court for a *Compulsory Schooling Order*. The Children's Court magistrate may order a Compulsory Schooling Conference to be convened.

- Prosecution in the Local Court

School and Department staff remain committed to working in partnership with you to address the issues which are preventing your child's full participation at school. In circumstances where a breach of compulsory schooling orders occurs further action may be taken against a parent in the Local Court. The result of court action can be the imposition of a community service order or a fine.

What age can my child leave school?

All New South Wales students must complete Year 10 or its equivalent. After Year 10, and up until they reach 17 years of age, there are a range of flexible options for students to complete their schooling.

Working in Partnership

The Department of Education and Communities recognises that working collaboratively with students and their families is the best way to support the regular attendance of students at school.

We look forward to working in partnership with you to support your child to fulfil their life opportunities.

Further information regarding school attendance can be obtained from the following websites:

Policy, information and brochures:

Please visit the Department of Education's *Policy library*

The school leaving age:
Please visit the Department of Education's *Wellbeing and Learning* website

Do you need an interpreter?

Interpreting services are available on request, including for the hearing impaired. The Telephone Interpreter Service is available 24 hours a day, seven days a week on 131 450. You will not be charged for this service.

For further advice and questions contact your educational services team

T 131 536

Learning and Engagement

Student Engagement & Interagency Partnerships

T 9244 512

www.dec.nsw.gov.au

© February 2015

NSW Department of Education and Communities

THANK YOU FOR YOUR COMMUNITY SUPPORT!



Muscle Car WAREHOUSE



**110 Rocky Point Road
KOGARAH NSW 2217
Phone: 02 9553 8965**



9583 1616

Buying, Renting or Selling

Call Ray Fadel

REAL ESTATE SANS SOUCI

THANK YOU FOR YOUR COMMUNITY SUPPORT!

0418 964 596

CHOMP
DEMOLITION • CIVIL
EARTHWORKS

www.chomp.com

Joe's
FRESH POULTRY
Family owned since 1985

**11-13 WEST BOTANY STREET ROCKDALE
MONDAY -SATURDAY 6AM-3PM**

**BREAST FILLET
\$8.99 P/KG**



ADVERTISEMENTS

Sutherland Shire Children's Choir

Enrolling now for 2022!

- 🎵 Contact us ASAP to book your group audition & free trial rehearsal!
- 🎵 Record a CD and perform at local concerts and community events!

natalie@cantabilemusic.com.au
www.cantabilemusic.com.au

*Kinetic***MartialArts**

**Strength | Fitness | Flexibility
Mind & Body**



Call now to arrange your **FREE** trial class now:

1300 MY DOJO

(1300 69 3656)